

NATURAL JADE

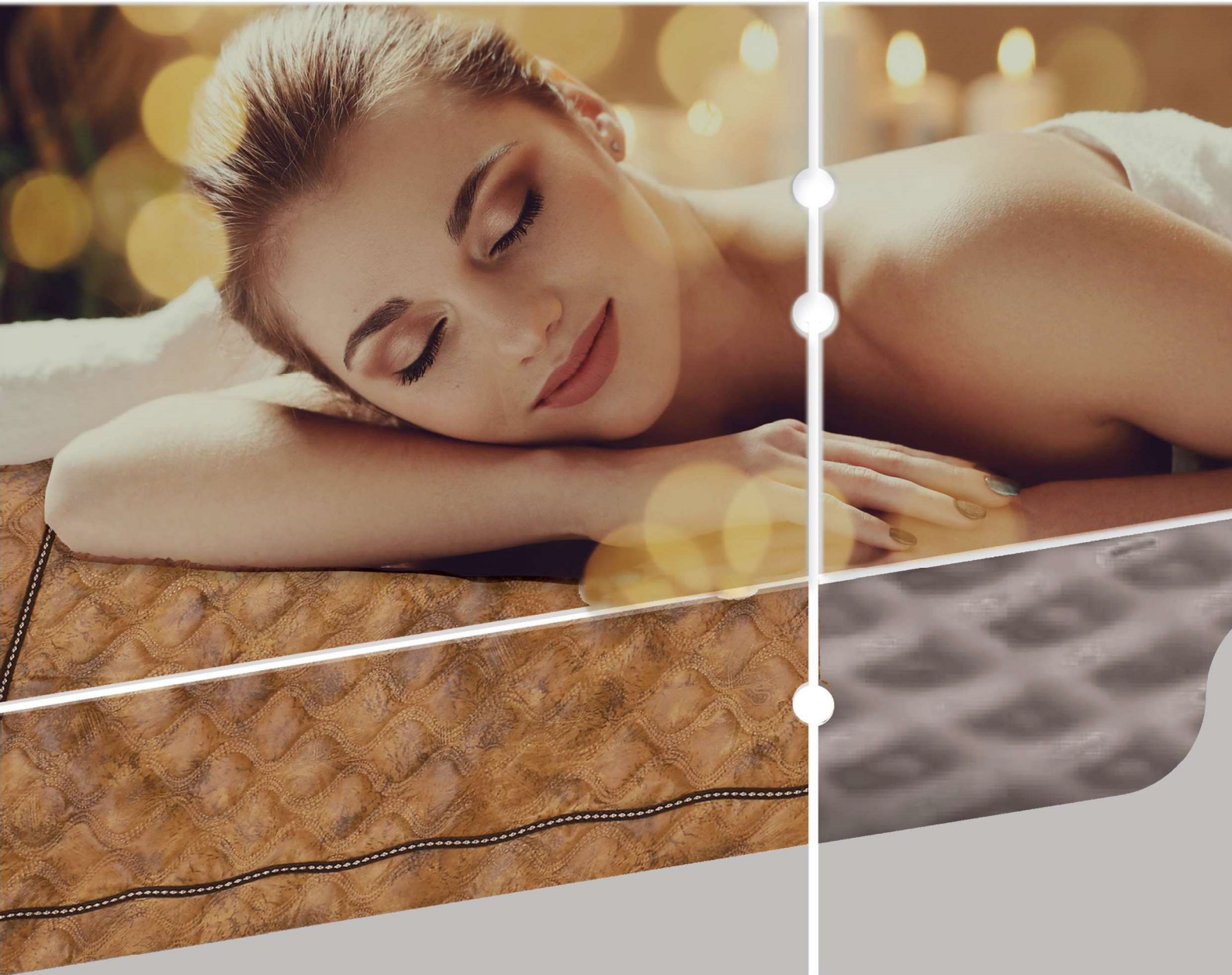
Hot-mesh mat

2mate
K-Magic



K-Magic ^{2mate}

NATURAL JADE
Hot-mesh mat



Best of the
BEST



NATURAL JADE



Masterpiece

A special gift from God!

Natural jade hot-mesh mat is for a healthy life.
It's the best luxury.

- 04. The effects of hot-mesh mat
- 06. Effectiveness of natural jade
- 08. Types of products.
- 09. How to use the product
- 10. Sauna & Patent and certificate

Contents

Hot mesh heating element

▶ Hot mesh electromagnetic wave safety certification.

Harmful symptoms of electromagnetic waves on the human body.

- > Headache, nausea, eye fatigue, etc.
Causing human symptoms in all fields of the nervous system.
- > Poor blood circulation, poor physical function, and causes diseases.
- > Promote aging by aging cells.
- > It weakens human resistance and causes genetic mutations.

▶ Hot mesh far infrared ray test certification.

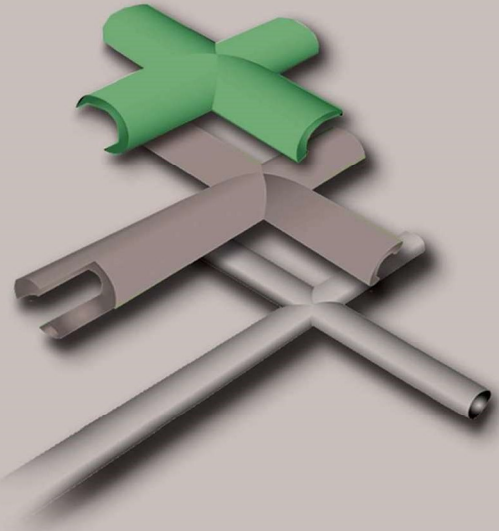
The effect of far-infrared rays on the human body.

1. Thermal action : Maintaining the body's body temperature at an appropriate temperature continuously.
2. Matureing: Promotes the growth and regeneration of the human body.
3. Self-purification: Provides balanced nutrition.
4. Dry action: Maintaining proper moisture in the human body.
5. Neutralization: Promoting waste excretion and neutralizing odors.
6. Resonance: Decomposes various nutrients and balances them to promote metabolic function.

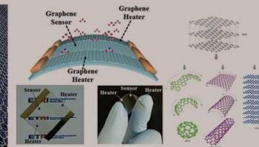
▶ Hot mesh a negatively ion test certification.

Effects of negative ions on the human body.

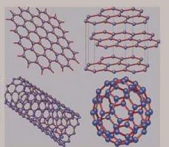
1. Fatigue recovery: Alkalinize body fluids to burn fatigue substances and activate metabolism.
2. Cell activation: Applies pressure to the cell membrane to help exchange ions in cells.
3. Autonomic nervous system: Balanced autonomic nervous system
4. Improving allergic constitution: Raising the body's immunity to suppress allergic development.
5. Mental stability: Increase happiness by activating entolpin.
6. Beauty effect: Promotes colon function and clears the skin.
7. Blood purification: Strengthen immunity by sterilizing blood bacteria.
8. Pain relief: Ion ballers balance to relieve pain



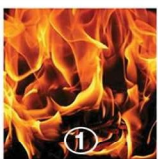
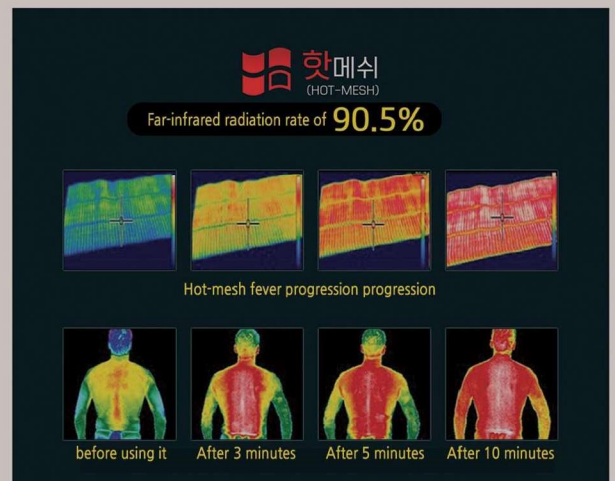
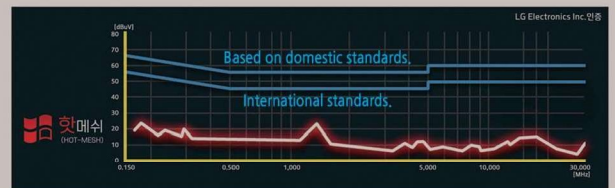
Characteristics of nanocarbon.



The crystal structure of nanocarbon.



Principle of determining nanocarbon.



Heat resistance



flexibility



durability



economic feasibility

- ① Safe from fire because it doesn't burn even at high temperatures.
- ② It's lightweight and can be constructed anywhere.
- ③ 1/5 lighter than iron and 10 times stronger.
- ④ High thermal conductivity even with low power consumption.

Hot-mesh

**Hot-mesh
will change it.**

1 degree of body temperature
determines life or death.



Hot-mesh technology for life.
Carbon Far Infrared Nude Mat is a patent that
applies the principle of heating mesh technology.
When you sleep with the product, it penetrates into
your body and causes an imbalance.
It helps relieve/improve and heal diseases.



04/05

Promote
balanced
nutritional
metabolism.

Super power
saving type.

Harmful
electromagnetic
waves zero

Strengthen
safety.

K-Mesh
EST. 2004

Natural jade heating element

It facilitates blood circulation, regains vitality, and gives you youth, It's a gemstone. If you touch it with your hands, women will, It is also effective in skin care. Native Mexicans used this gemstone. The origin of the name of the place where it is trimmed and worn around the sides and Health studies have begun. Kidney disease, neuralgia, or the most common thing at that time. Treatment of anxiety, anxiety, abdominal pain, headache, toothache, and shoulder pain from all kinds of complexes. It was also used to do it.



Origin and efficacy of natural jade mat.

- ▶ **First and second far-infrared light emission:**
The first far-infrared rays by carbon heating.
It is transmitted to the natural odor that emits the second far-infrared rays in our bodies. It penetrates deep into your body to facilitate blood circulation and your daily energy. It supplies paper. (Far-infrared rays generated by natural jade light are 8-11 microns) Also called the corresponding growth light) -94% emission
- ▶ **Velvet stepping treatment for a comfortable sleep:**
A separate velvet stamping fabric was used for comfortable and soft sleep and skin contact effects, and the effects of natural odor were completely exposed so that the skin could feel the effects of natural odor directly. (Natural smell is the only gem that you can enjoy by touching your skin)
- ▶ **Other effects:** It blocks harmful electromagnetic waves (Hwibagras), antibacterial antifungal. Effect (Antibacterial antifungal compression cotton), air cleaning function and anion function, for two people, For four seasons, which combines various functions such as left and right heating and automatic temperature control. It's a medical mat.
- ▶ **Conclusion:** You wash your clothes every day and clean your room every day. Why do you wash your body? Don't they clean up? Royal Sense, a natural gem mat, We're going to get some good sleep and clean our bodies. It is the best mat given by God.



Natural jade mats are harmful to the human body from water veins. Left turn energy (negative energy) to right turn energy (positive energy). Because of its excellent ability to remove it, the mat industry from the Korea Water Purification Association First time to be certified with the highest grade, AAA.

Natural jade



Natural jade

It helps blood circulation to regain vitality.
It is a gemstone that gives youth.
If you touch it with your hands,
It is also effective in women's skin care.



06/07



NATURAL JADE Hot-mesh mat

Single type

For sleeping bags

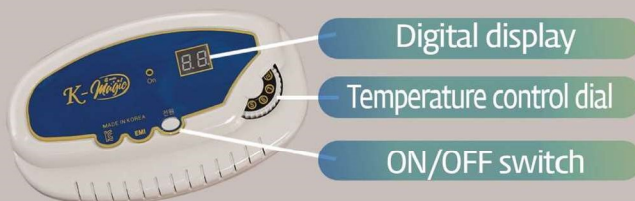


규격

700x1100mm
700x2000mm
900x2000mm

After assembling it.▶

How to use it



- ▶ Insert the connector so that the groove fits.
- ▶ Connect the power plug to the outlet.
- ▶ When the power button is pressed, the power lamp and the heating lamp are turned on.
- ▶ Turn clockwise while looking at the digital display window and set the desired temperature.
- ▶ When the temperature is set, the heat lamp turns off and the power is automatically cut off.
(When the temperature goes down, the heating lamp turns on and starts heating again.)
- ▶ After using it, turn the regulator dial to the left and turn off the power when you hear a "tick".
- ▶ Always pull out the power when you go out.

Sofa Single type

packaging bag



규격

700x1100mm



Ingredients inside.

08/09

precautions.

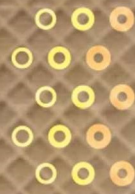
- ▶ Place it at the highest temperature and press the function selection button (warm). And I coin it for about an hour, wrap it, and store it.
- ▶ Keep it in a place without moisture.
- ▶ If you continue to use it, dry it once a month in a well-ventilated place.
- ▶ Always turn off the power when you're not using it.
- ▶ Do not operate or modify the device.
- ▶ In the event of a physical abnormality, stop using it immediately and consult the purchase point.
- ▶ Turn off the power plug before you prepare it.
- ▶ Do not use chemical agents such as benzene or thinner.
- ▶ Clean the surface with a vacuum cleaner.
- ▶ The main body and the controller.
 1. Wipe the surface with a neutral detergent.
 2. Use a neutral detergent and wash it with a dry cloth.
 3. Be careful not to get water on the connector or regulator.
 4. After cleaning the product, dry it thoroughly.



Product name : Natural jade heating system
Model name: nj 700hh
Rated voltage: AC 200v / 60Hz / 800w
Specification: 700mm x 1100mm x 10mm
Manufacturer: Hanwha Medical Instrument
Seller: Separately marked
Date of manufacture: Separately marked.
A / S :



NATURAL JADE Hot-mesh mat



Natural Jade SAUNA space



Patent Certifications



♣ Sauna's soft heat relaxes muscles and relieves blood vessels. It expands to help blood circulation/metabolism. It also has a good effect on musculoskeletal pain.



Muscle relaxation.
Relieving pain relief.

♣ The soft heat of the sauna moisturizes your skin. It maintains and makes your skin elastic.



Skin improvement.

♣ After a sauna, your blood circulation gets better, so nervous. You can relax and get a good night's sleep.



Improving insomnia.

♣ There are many negative ion effects on natural jade mats. It's there is. The negative ion effect is. You can relax and do outdoor activities often in the cold winter. I get depressed because I don't have it. Minus. Ion effects improve depression.



Improving depression.
And mental balance.

♣ When you go to a sauna, you sweat a lot, It's going to be discharged. (The cause of various diseases and pain in the body) Bad toxins build up and make your blood murky. Or it interferes with the flow of blood)



Detox.



10/11



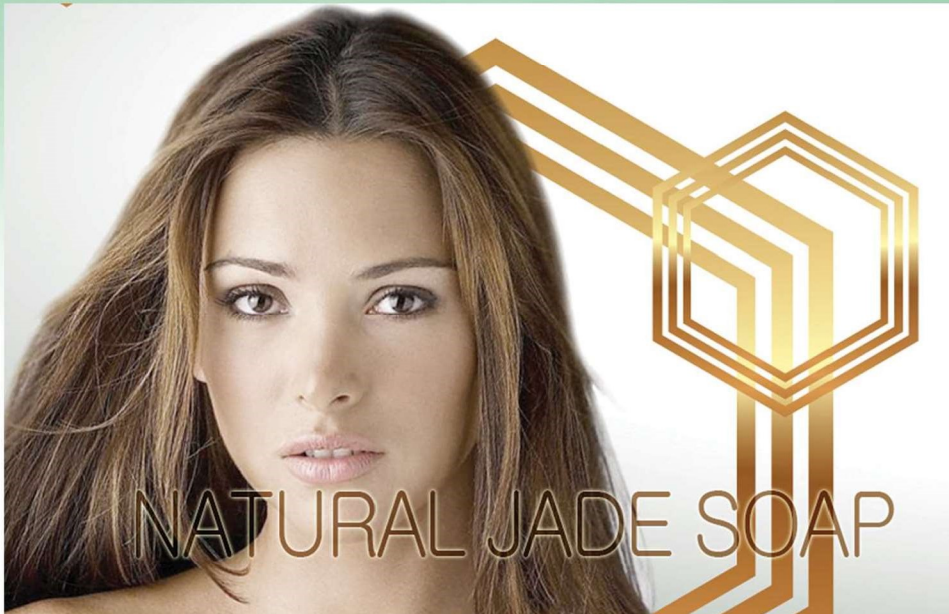
천연
비취
비누

Meet the amazing miracle created by God!



Seraphim's natural jade soap

Seraphim is a fantastic high-end beauty soap that helps the skin breathe smoothly, tired of daily life and various environmental pollution, with the perfect combination of nanopowder and natural minerals.



SBR Power Advantage India Private Limited
Plot 2 , S1,Balasubramanian st, Sapthagiri nagar, Porur, Chennai, India
Tel : 044-42153235 , Email : info@advantagemep.com